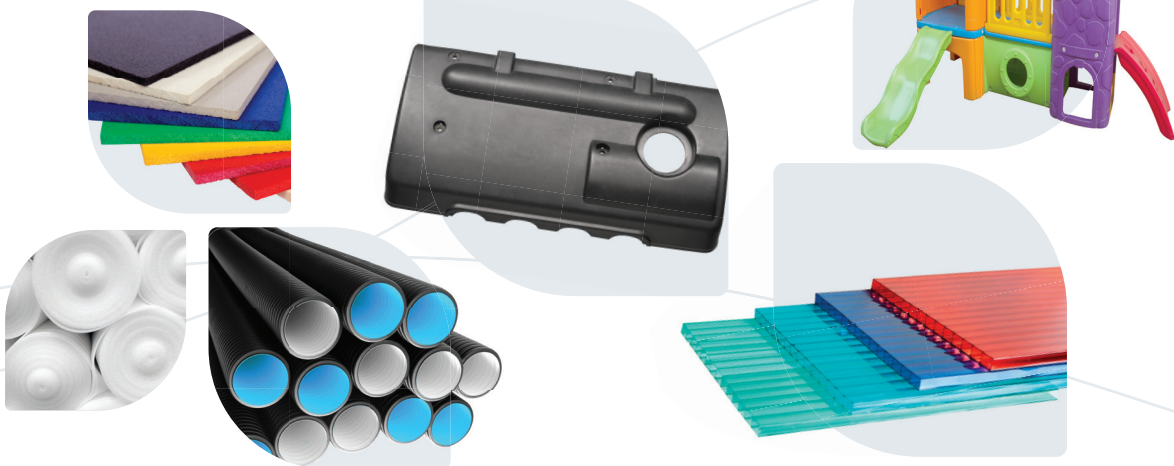


Inspire™ 114 EU

Applications

- Blowmolding big parts
- Hollow sheets
- Lightweight boards
- Foamed film
- Corrugated pipes
- Thermoforming automotive



Features

High mechanical performance

- High stiffness
- High impact

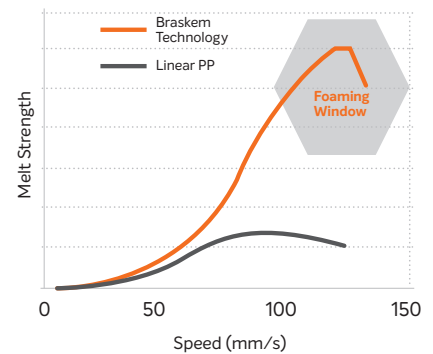
Faster extrusion process improves output for clients

- Less melt fracture
- Higher flow

Increased melt strength for

- Thermoforming
- Foamed sheets
- Long parison in BM process

Food contact possible



Properties		
Physical Properties	Nominal Value (SI)	Test Method
Density	0.900 g/cm ³	ISO 1183
Melt Mass-Flow Rate (230 °C/2.16 kg)	0.5 g/10 mim	ISO 1133
Flexural Modulus	1400 MPa	ISO 178
Tensile Modulus	1450 MPa	ISO 527-2
Tensile Stress at Yield	28.5 MPa	ISO 527-2
Tensile Strain at Yield	7.5 %	ISO 527-2
Charpy Notched Impact Strength (23 °C)	65 kJ/m ²	ISO 179/1eA
Charpy Notched Impact Strength (0 °C)	25 kJ/m ²	ISO 179/1eA
Charpy Notched Impact Strength (-20 °C)	4.5 kJ/m ²	ISO 179/1eA
Heat Deflection Temperature (0.45 MPa)	95 °C	ISO 75-2/B
Vicat Softening Temperature at (10 N)	155 °C	ISO 306/A
Melt Strength (190 °C)	875 mN @ 105 mm/s	Internal