

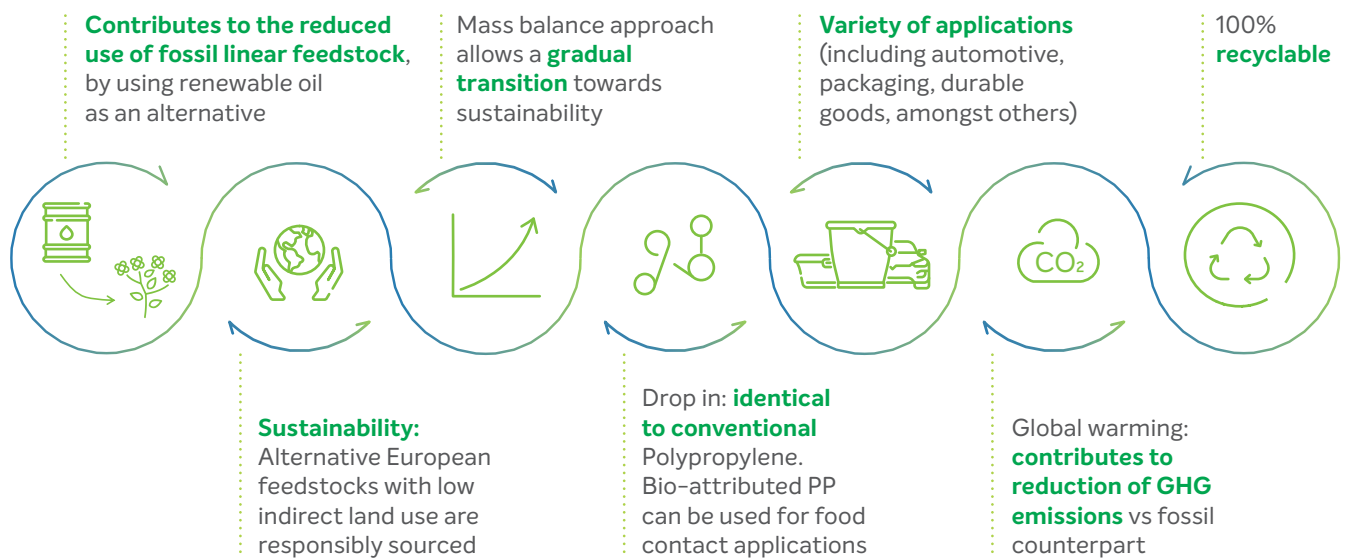


Introducing **bio-attributed**
mass balance PP



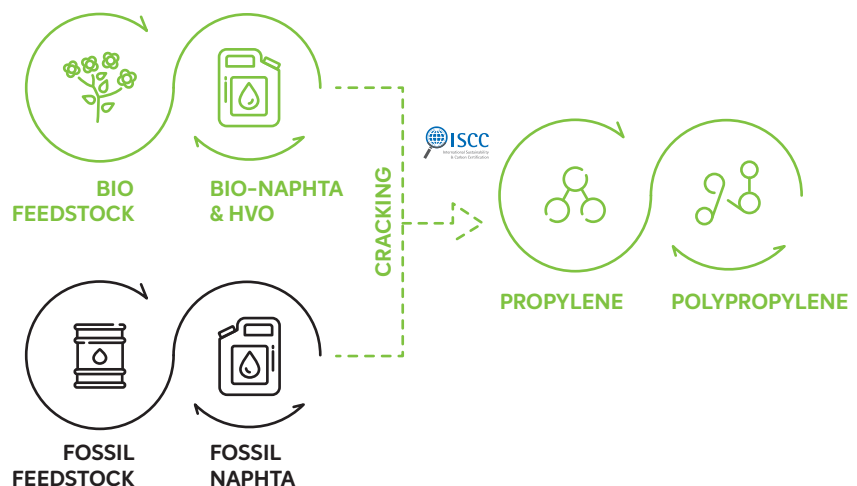
Introducing **bio-attributed mass balance PP**

By using the mass balance approach Braskem is scaling up the amount of **bio-attributed feedstock** that can be re-introduced in the value chain.



How **production** works?

The production route of propylene and polypropylene, from mass balance bio-attributed or fossil feedstock, is exactly the same. Therefore, both bio-attributed and fossil PP have the same characteristics, quality and properties.



Availability

PRODUCTION
EUROPE

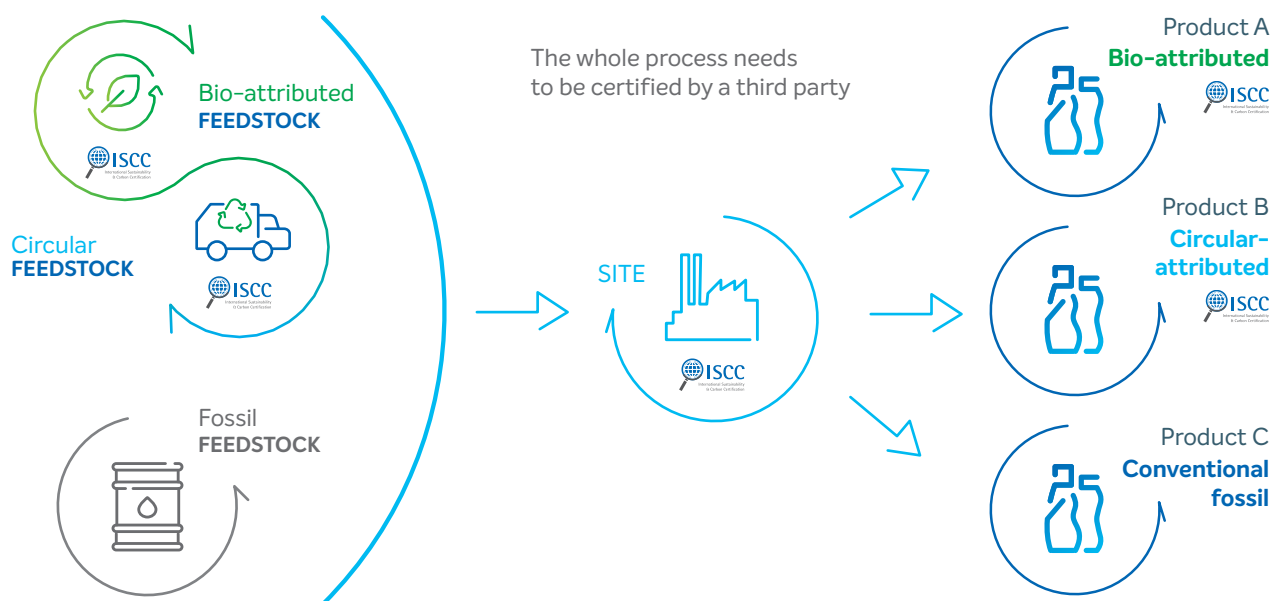
MARKETS
GLOBALLY

PORTFOLIO
PP (HOMO, COPO, RANDOM)

What is **mass balance**?

Mass balance has been designed to trace the flow of materials through the value chain. This approach enables the tracking of the amount of circular and/or bio-based content in the value chain and attribute it based on verifiable bookkeeping.

Why do we introduce mass balance? Mass balance is an essential approach that allows the market to transition in a traceable and transparent manner to a low carbon economy.



MASS BALANCE



THIS IS HOW WE ACCELERATE A TRANSITION TO A...

CIRCULAR
& LOW CARBON
ECONOMY

